



PUSD Arts Ed. Annual Report

★ Prop 28

2025-2026

Table of contents.

01

Prop 28 Overview

02

Site Allocations

03

Spending Report

04

Questions?

01

Prop 28 Overview

Prop 28: Arts & Music In Schools

Passed by CA Voters in 2022

Prop 28 provides ongoing support for arts instruction starting in 2023

Arts Education Program Instruction includes areas of instruction covered by the five arts disciplines provided in the California Arts Education Standards.

These five disciplines are

- Dance
- Media Arts
- Music
- Theatre
- Visual Arts

LEA is required to ensure 80% of AMS funds are expended to employ certificated or classified personnel to provide “arts education program instruction”

Supplement, NOT Supplant!

Funding is used to GROW Arts Education
Opportunities for ALL Scholar-Artists!



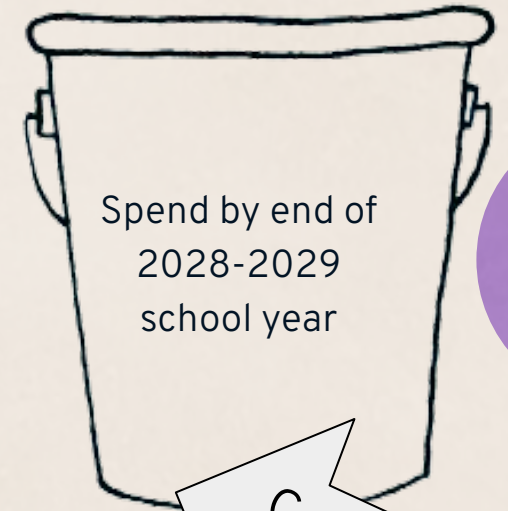
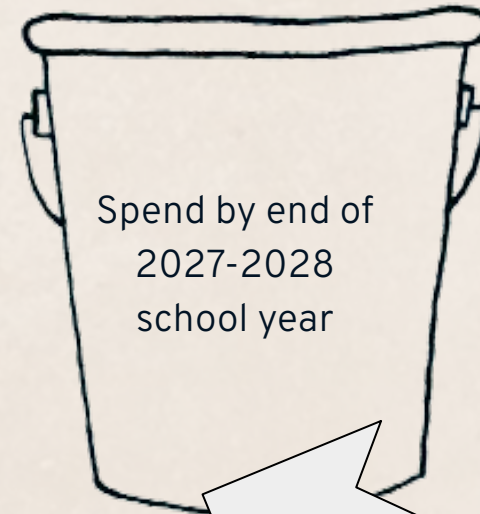
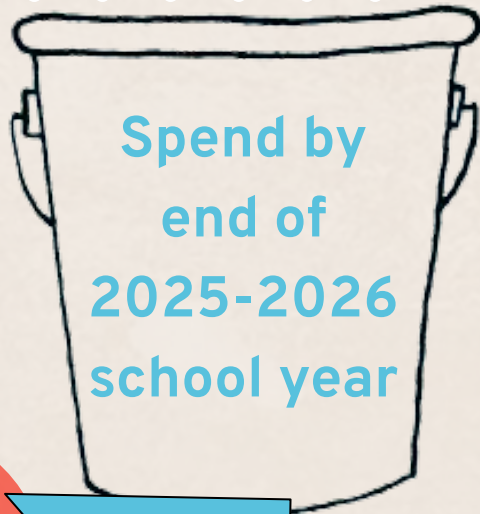
Funding is Allocated in a 3-year Cycle

2023-2024

2024-2025

2025-2026

2026-2027



Must be spent by end of THIS year

Must be spent by end of next year next!

We are HERE

Coming Next Year!





\$0

Left to be spent from 2023-2024 allocation

As of June 30, 20206



02

Site Allocations

Site Allocations for 25/26 School Year

(Does not include carry over from previous years)

Funding Allocations are based on two factors:

- Enrollment (ADA)
- Equity Based (focus on economically disadvantaged students)

Site	Allocation
Black Diamond High School	\$40, 110
Foothill Elementary	\$ 102, 042
Heights Elementary	\$ 106, 538
Highlands Elementary	\$98, 304
Hillview Jr. High	\$171, 828
Los Medanos Elementary	\$124, 649
Marina Vista Elementary	\$ 117, 855
Martin Luther King Jr. Jr. High	\$137,864
Parkside Elementary	\$112, 661
Preschool (District Office)	\$ 32, 112
Pittsburg High School	\$ 649, 730
Rancho Medanos Jr. High	\$ 157, 260
Stoneman Elementary	\$116, 148
Willow Cove Elementary	\$112. 045

03

Prop 28 Spending Report

10.1 FTE funded with
Prop 28: Arts & Music in Schools
In 2025-2026

This is an decrease of 0.2 FTE from last year

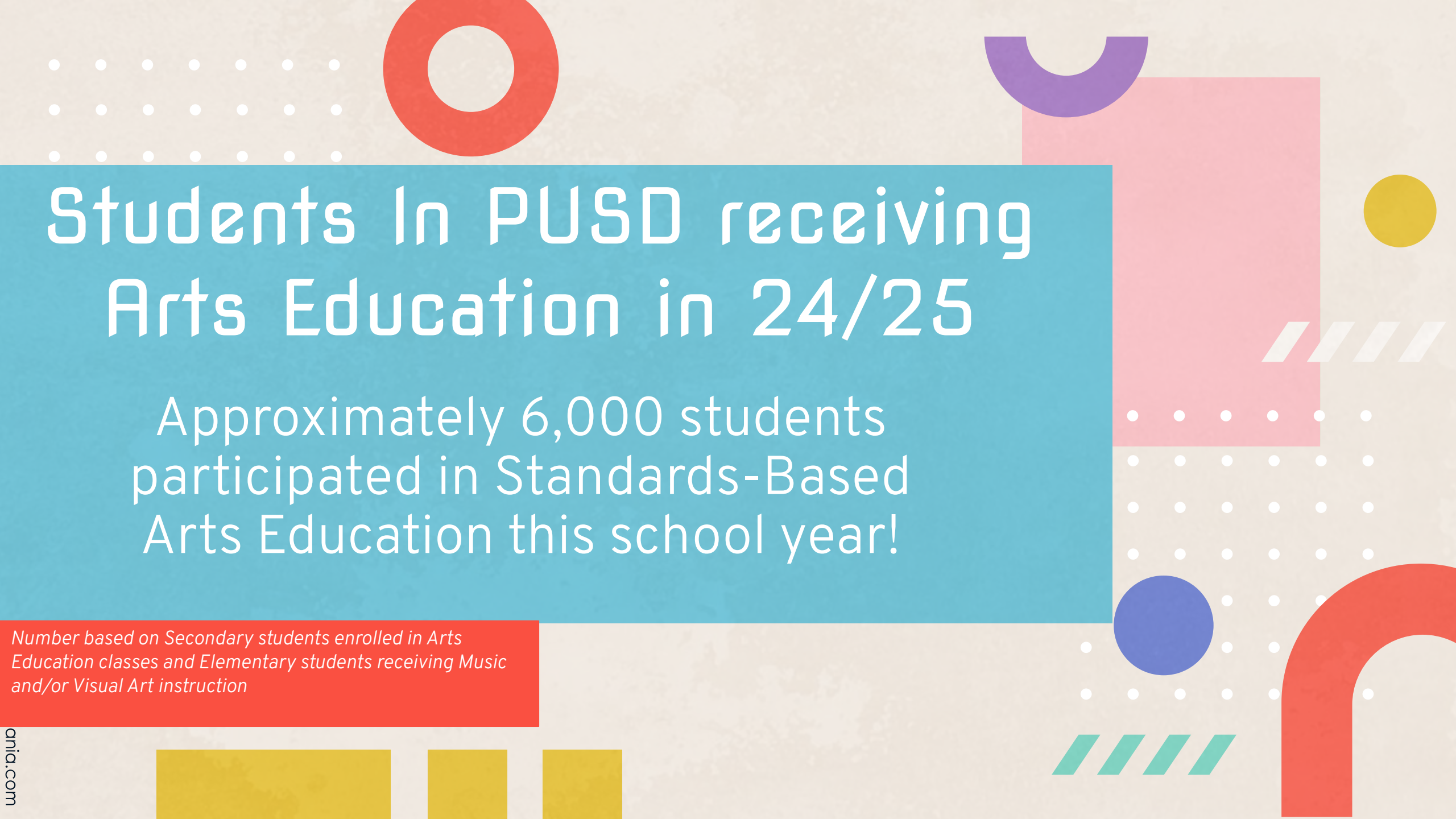
**AMS
Funded
Staffing
25/26**

Site	23/24 School Year	24/25 School Year	25/26 School Year
Ed. Services	1.0	1.0	1.0
Early Childhood Education	0	0	0.2
Foothill	0.5	0.5	0.5
Heights	0.5	0.5	0.5
Highlands	0.5	0.5	0.5
Hillview	0	1.0	1.0
Los Medanos Elementary	0.5	0.5	0.5
Marina Vista Elementary	0.4	0.4	0.2
Martin Luther King Jr. Jr High	0	1.0	0.6
Parkside Elementary	0.5	0.5	0.5
Pittsburg High School	1.8	2.7	2.7
Rancho Medanos Jr. High	1.0	1.0	1.2
Stoneman Elementary	0.5	0.5	0.5
Willow Cove Elementary	0.6	0.6	0.6

**Prop
28
FTE
By
Site**

All Arts Education Staffing (FTE)

Site	22/23	23/24	24/25	25-26
Black Diamond High School	1	1	1	1
Early Childhood Education	0	0	0.2	0.2
Foothill Elementary	1	1.5	1.5	1.5
Heights Elementary	1	1.5	1.5	1.5
Highlands Elementary	1	1.5	1.5	1.5
Hillview Jr. High	1.6	1.6	2.6	2.6
Los Medanos Elementary	1	1.5	1.5	1.5
Marina Vista Elementary	1	1.5	1.5	1.2
Martin Luther King Jr. Jr. High	1	1	2	1.6
Parkside Elementary	1	1.5	1.5	1.5
Pittsburg High School	9.4	12.9	12.9	11.5
Rancho Medanos Jr. High	1.2	2.2	2.2	2.4
Stoneman Elementary	1	1.5	1.5	1.5
Willow Cove Elementary	1	1.5	1.5	1.6
TOTAL ARTS FTE	22.2	30.7	32.9	31.1



Students In PUSD receiving Arts Education in 24/25

Approximately 6,000 students
participated in Standards-Based
Arts Education this school year!

*Number based on Secondary students enrolled in Arts
Education classes and Elementary students receiving Music
and/or Visual Art instruction*

04

Questions?